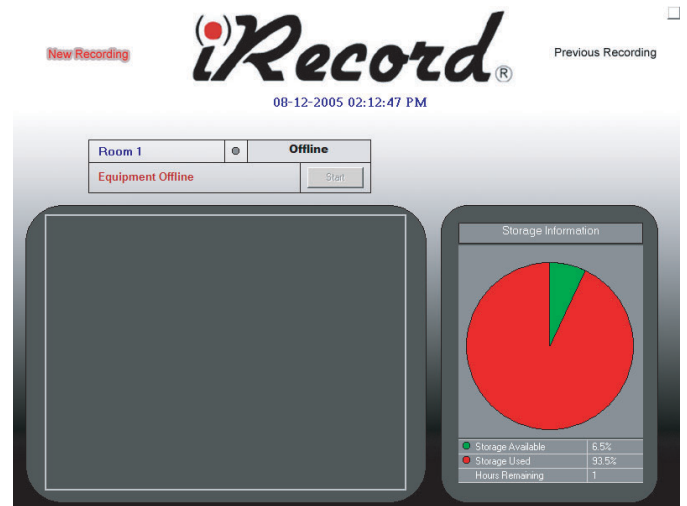


QUICK START REFERENCE GUIDE

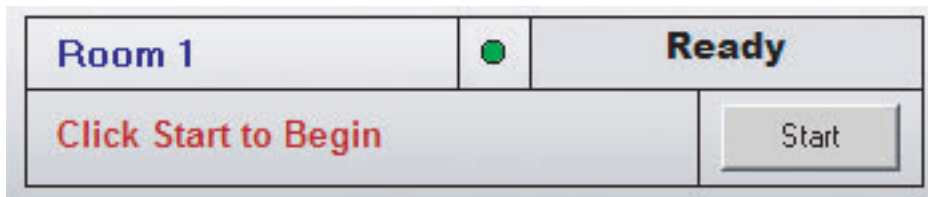
STEP 1:

Turn ON your iRecord encoding system. Use your mouse and double click the iRecord VI Media Encoder icon



Once loaded, you will see the iRecord Media Capture program display on your screen

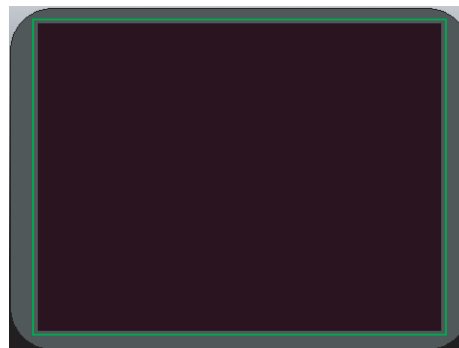
STEP 2:



To begin recording, left click the the **START BUTTON**



The irecord Storage graph shows how much time in HOURS available on your system



When IDLE, BEFORE RECORDING, the video preview monitor window will have a **GREEN BORDER**

When RECORDING, the video preview monitor window will have a **RED BORDER**

SUPPORT

Contact us Today for more information or support

phone: 1-800-425-7637
email: support@irecord.tv
web: http://www.irecord.tv